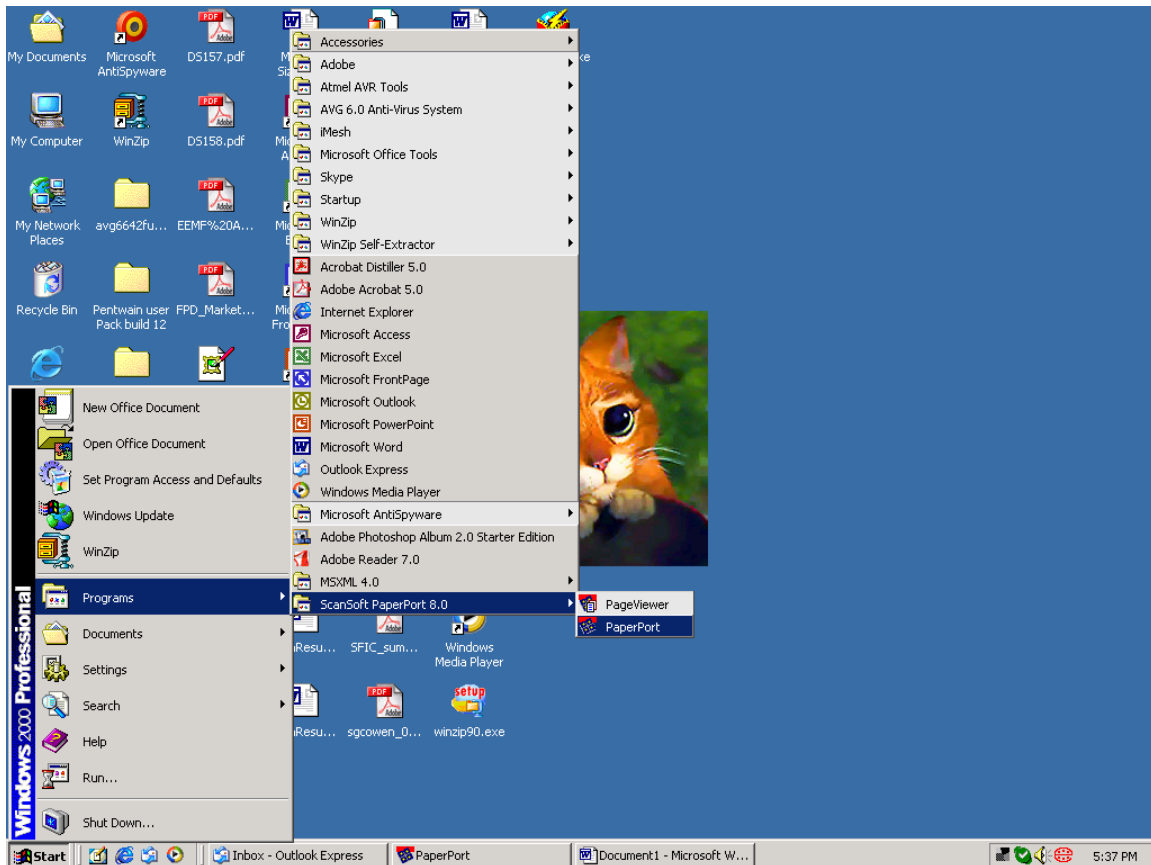


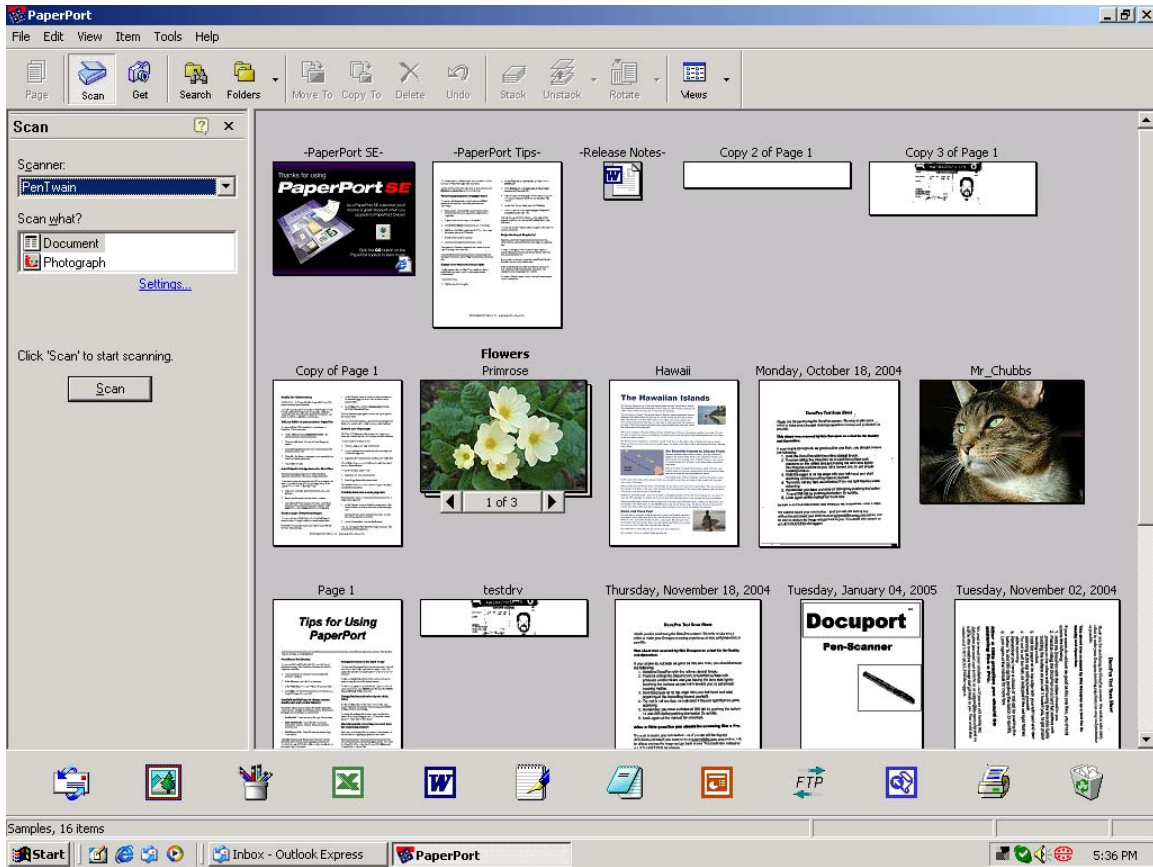
Pen Scanner Calibration

Click on start than go to programs for Windows 98 or Windows 2000 or go to All Programs for Windows XP. Select ScanSoft PaperPort 8.0 Folder and than Click on PaperPort.



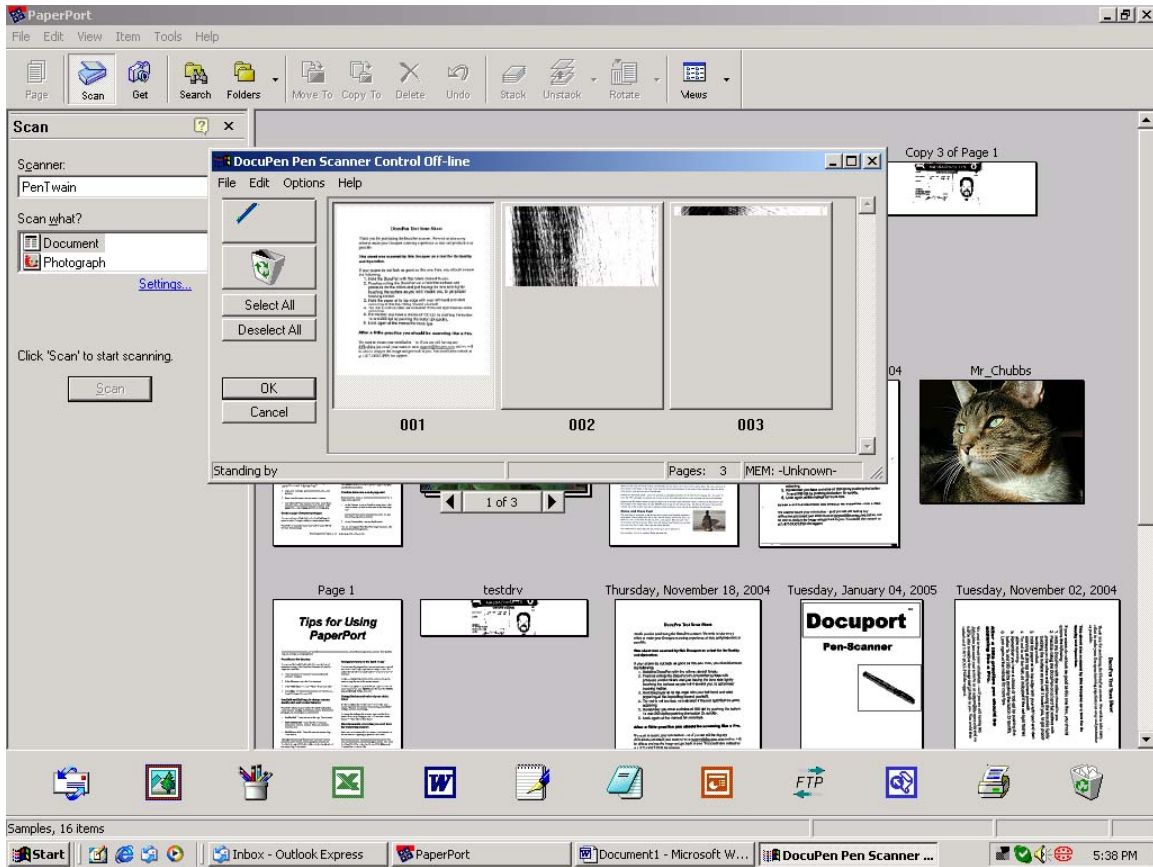
STEP 1

Once in PaperPort, Select the Scan Tab. Make sure the Scanner selected is PenTwain. On the Scan What? Option select Documents than click on the Scan Button.



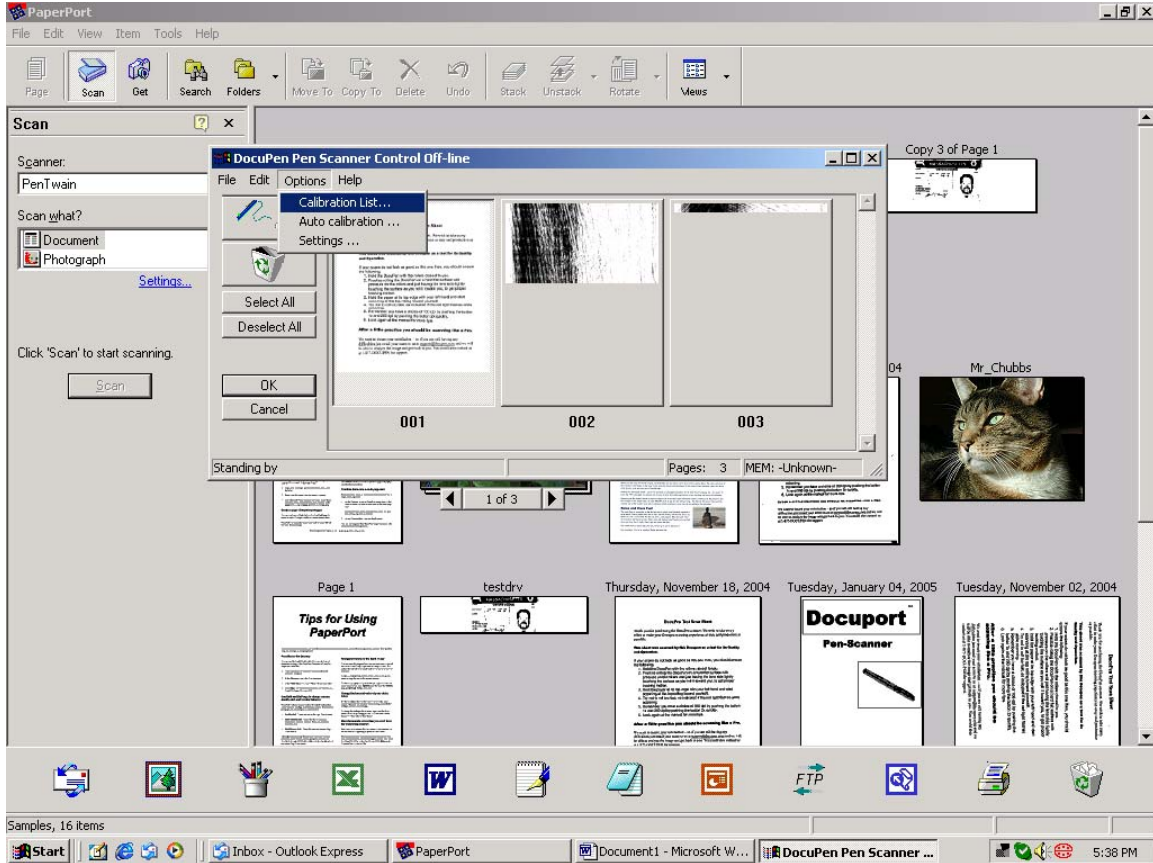
STEP 2

A window caller DocuPen Pen Scanner Control Off-Line will appear.



STEP 3

Click on Options on the drop down menu, and then select Calibration List.

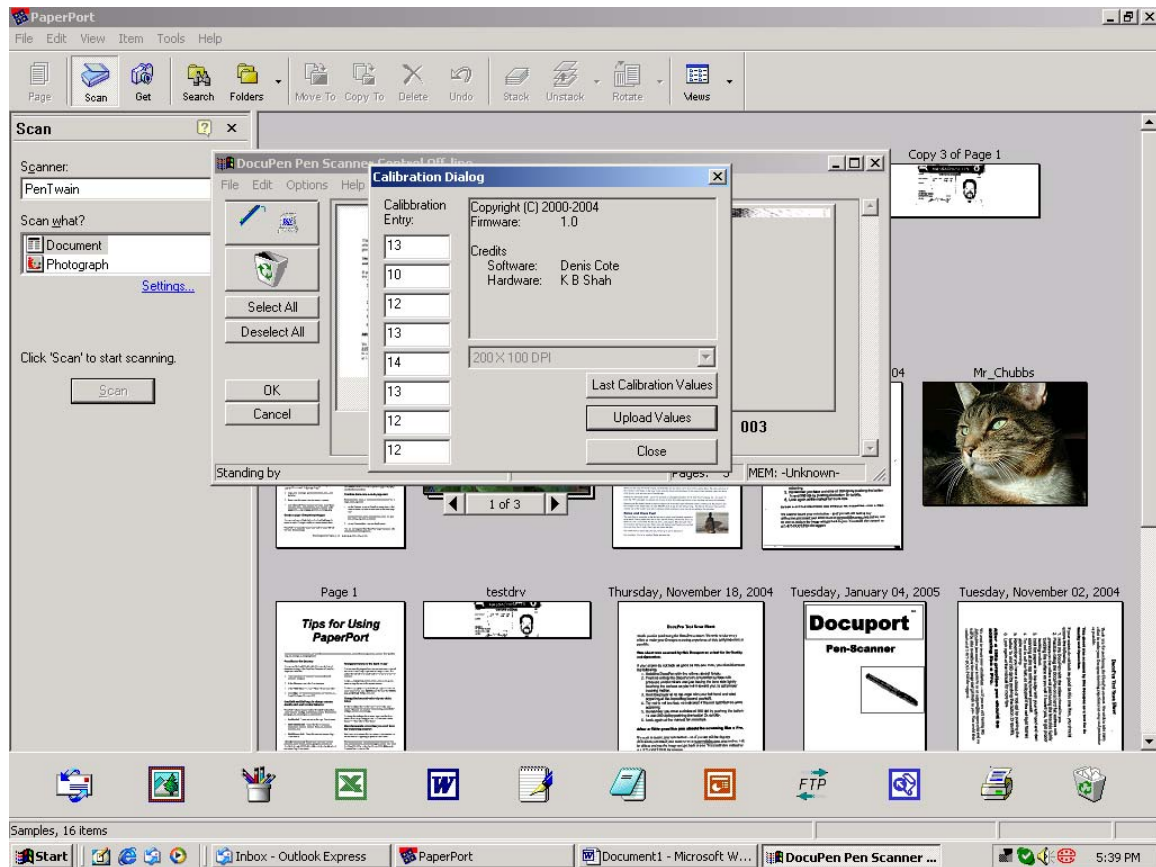


STEP 4

A new window called Calibration Dialog will appear. In this window there are 8 values. These values should be set as follows:

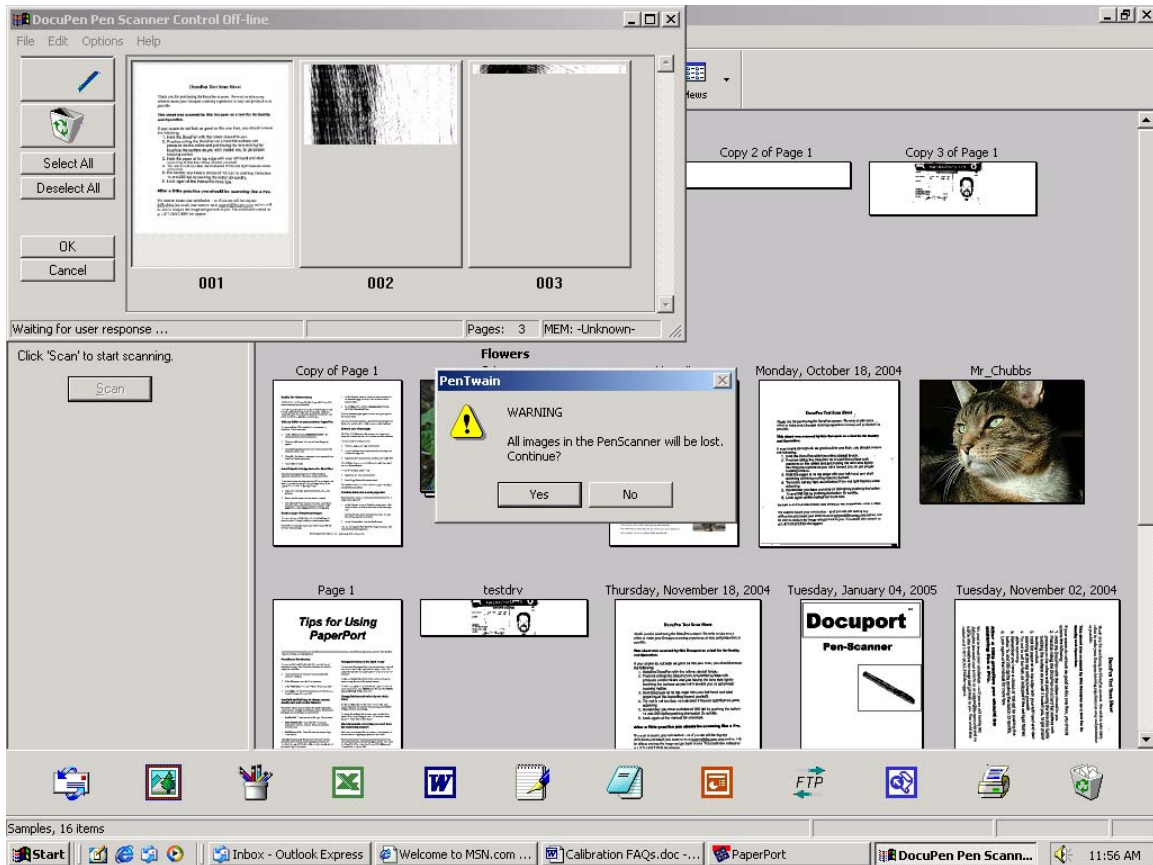
- 11
- 13
- 11
- 13
- 11
- 13
- 11
- 13

Then click on upload values.



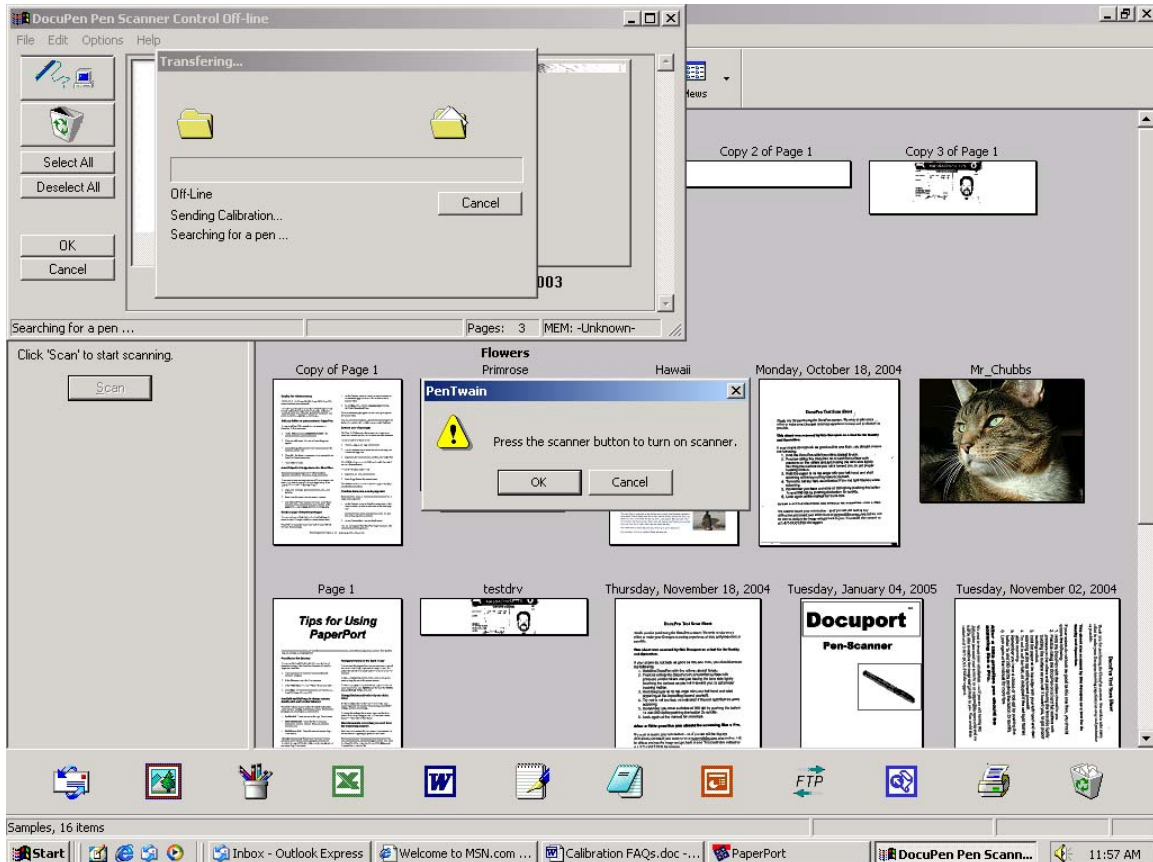
STEP 5

A warning message will indicate that all images in the pen scanner will be lost. Click ok to continue.



STEP 6

You will next be prompted to press the scanner button to turn on the scanner and then click ok. In matter to get best results place the mouse cursor on top of the OK button. Hold the scanner in your left hand. Click on the scanner button to turn on scanner and as soon as you will see one red light and two green lights come on the left hand corner of the scanner click on the ok button.



STEP 7