

DocuPen PenTWAIN Installation Update for PaperPort 10

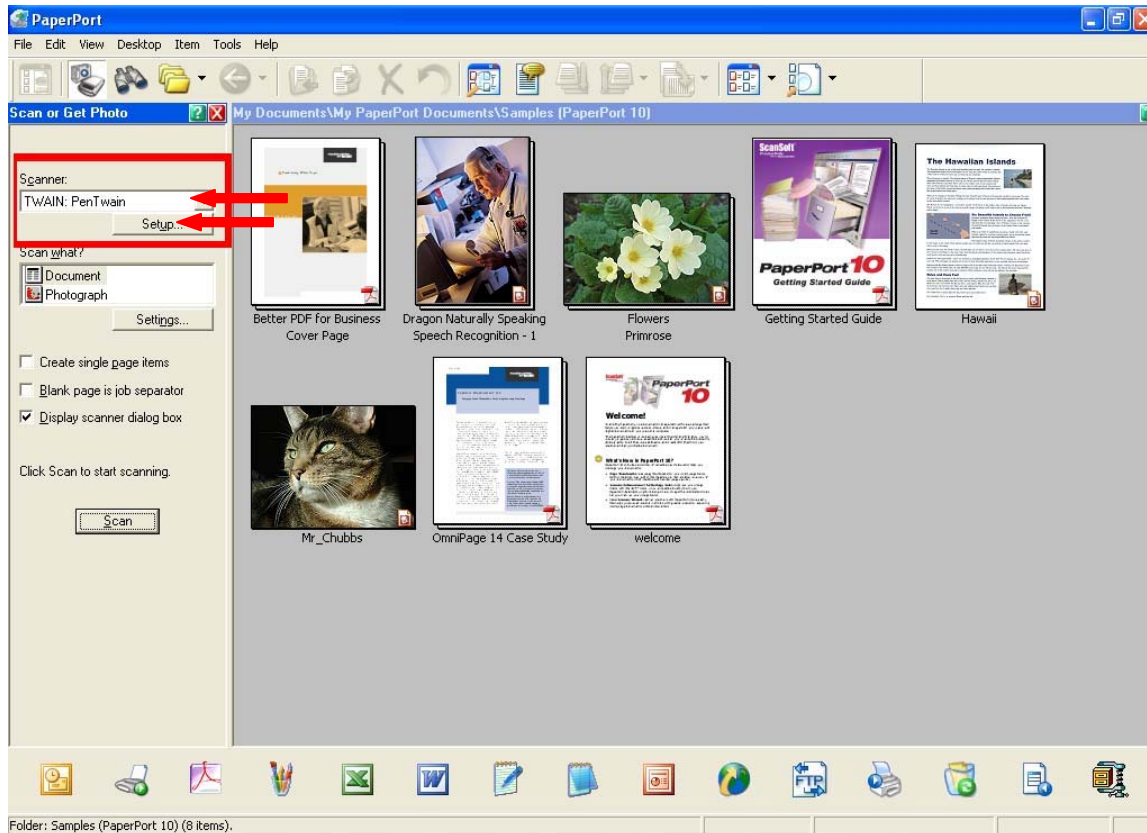
If you have any questions regarding this instruction, please feel free to contact our toll free tech support line at 1-877-DOCUPEN (3628736).

1. Install the PenTWAIN.exe file on your system.

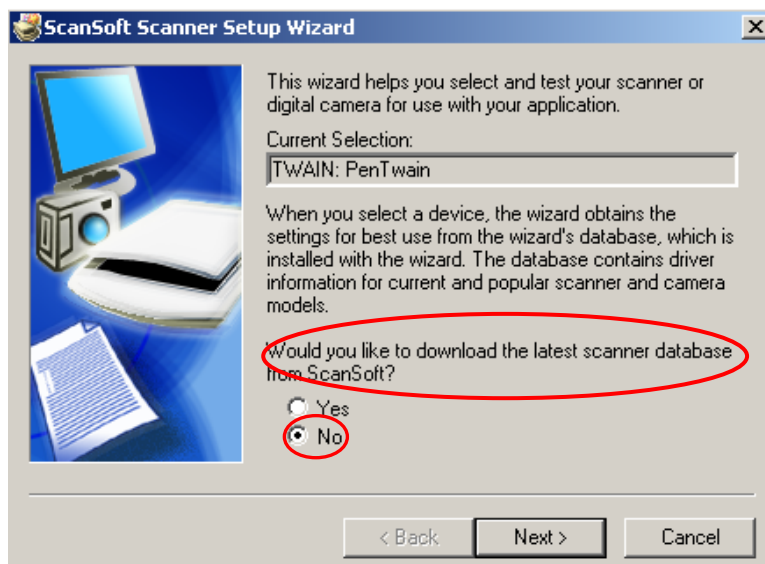
2. Open PaperPort 10 and click on the “Scan or Get Photo Icon”



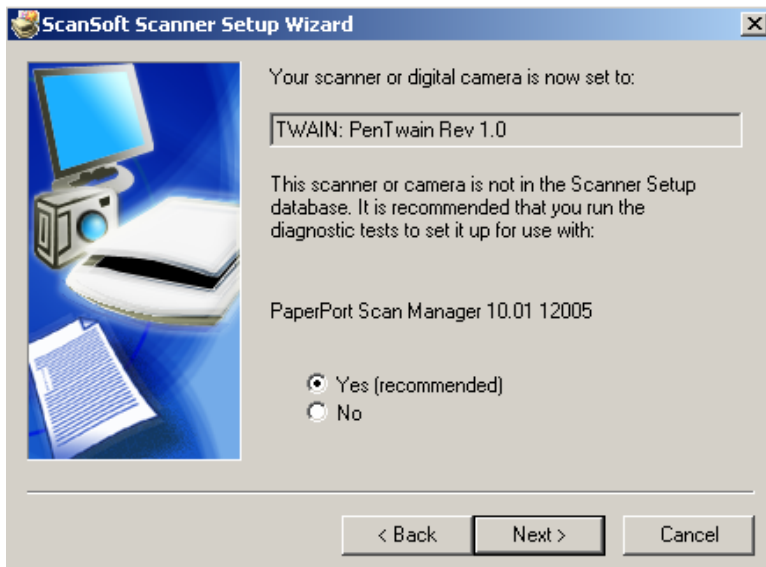
3. In the Scanner drop down menu, select “TWAIN: PenTWAIN”, then click on the Setup button under it.



4. The ScanSoft Scanner Setup Wizard window will appear. Select “No” when asked “Would you like to download the latest scanner database from ScanSoft?” Then click “Next”.



5. Select “Yes” when asked “Would you still like to test your device with PaperPort Scan Manager 10.0 12004?” Then click “Next”.



6. The wizard will now test the connection, and will prompt you to close any other applications that might be using your scanner. Then click “Next”.

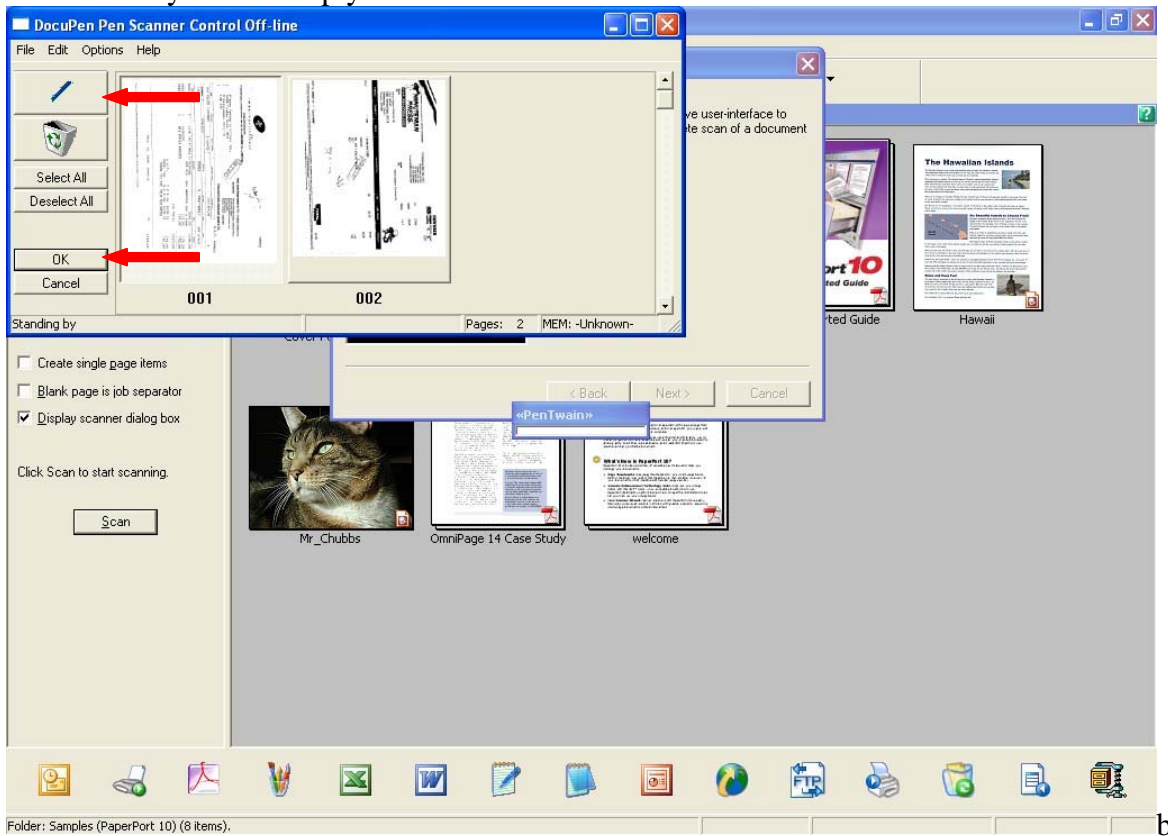
7. Keep the Settings shown below and click “Next”



*Note: If “Report paper sizes available” or “Check ADF capabilities” or “Black & white scan test” options are grayed out, click “Next”

8. The wizard will now prompt you to do a test scan with the PenTWAIN, click “Next”.

9. The PenTWAIN window will now appear. You may choose to perform a test download from the DocuPen or you can simply click “OK” on the PenTWAIN window.



10. You will be sent back to the wizard, where you can click “Next” to proceed to optimize your scanner from the below message.



11. The wizard will attempt to scan in binary mode, click “Next”.

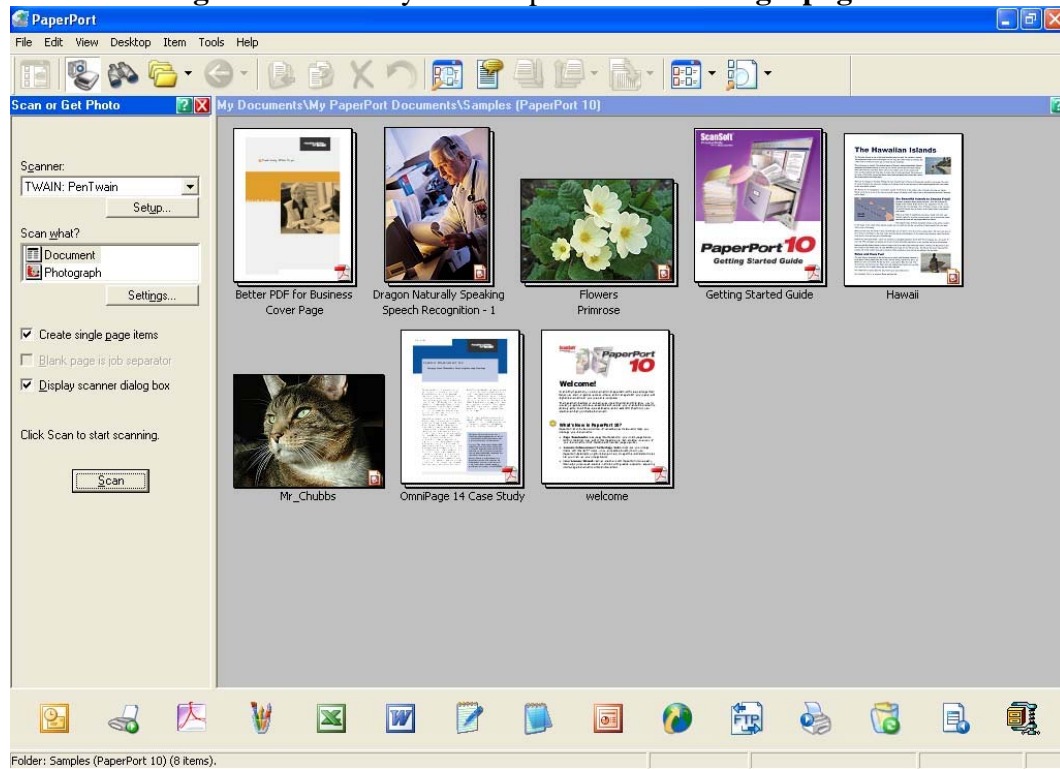
12. The wizard will now have completed the scan, click “**Next**”.



13. The ScanSoft Scanner Setup Wizard has successfully configured your scanner, click “**Finish**”.



14. The “Scan” button should now be activated, you can also check off the option of “Display scanner dialog box”. You may also keep the “Create single page items” checked off.



If you have any questions regarding this instruction, please feel free to contact our toll free tech support line at 1-877-DOCUPEN (3628736).